

CLARK COUNTY – PUBLIC WORKS ORCHARD DETENTION BASIN LAS VEGAS, NEVADA



The Detention Basin, just east of Harney Middle school, is a levee that extends northeast from the basin, approximately 2000 feet toward Charleston Boulevard and a shorter levee extends south from the basin approximately 1200 feet.

The scope of the project was to collect and attenuate runoff from a 1.79-square mile drainage area extending up to Frenchman Mountain. The project included a detention basin with a design volume of approximately 16 acre feet, low-level outlet facility, inlet structure, and levees extending north and south of the basin. The levees will intercept flow from several washes draining the mountains and divert it into the basin.

GES worked closely with CCPW and the QC testing firm to complete the project.

GES provided materials testing QA services for this project. The project entailed using the native material from the site as embankment. The native material was a conglomerate of material with a variety of material types which made density gauge compaction testing difficult. GES performed sand cone testing to provide our client CCPW with evidence that the levee was constructed per the approved documents. GES worked closely with CCPW and the QC testing firm to complete the project.

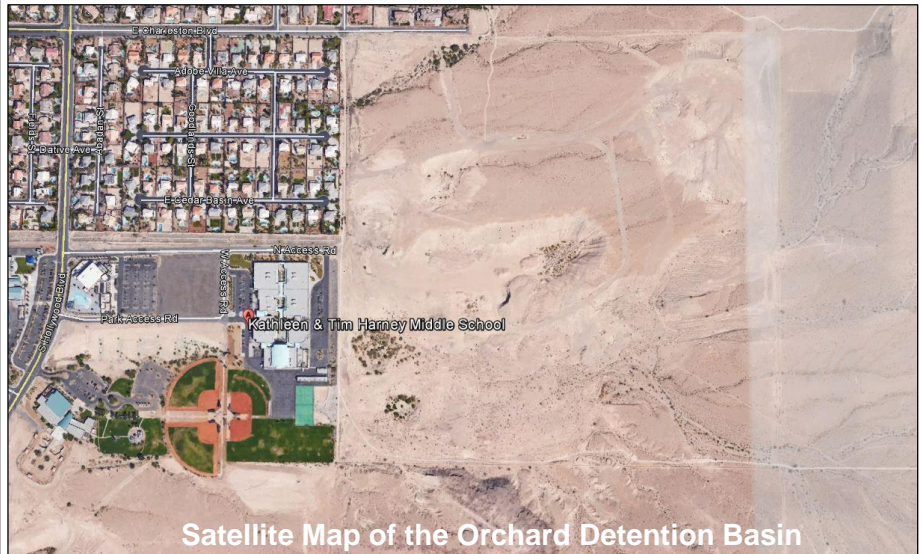
PROJECT OWNER:
Clark County – Public Works

GES CLIENT:
Clark County – Public Works

POINT OF CONTACT:
*Mr. Mike Mamer
(702) 455-6081*

TOTAL PROJECT COST:
\$4,929,000

FIRM RESPONSIBILITY:
\$64,000



Satellite Map of the Orchard Detention Basin



Orchard Detention



Orchard Detention

OTHER GES PERSONNEL WHO PROVIDED SERVICES NOT LISTED ON FORM H

Eric Moss – Materials Testing Technician
Michael Janoff – Materials Testing Technician
Thomas Thompson – Special Inspector
Melissa Salva – Staff Professional

Allen Sanders – Laboratory Technician
George Cardona – Materials Testing Technician
Jeremiah Johnson – Laboratory Technician
Tiffany Fuller – Laboratory Technician