

**REGIONAL TRANSPORTATION COMMISSION  
SPECIAL INSPECTION SERVICES FOR:  
Phase IV- 150 BUS SHELTERS & Phase V - 300 BUS SHELTERS  
LAS VEGAS, NEVADA**



The initial project consisted of the construction of 150 general market bus shelters in Las Vegas, Henderson, North Las Vegas and unincorporated Clark County. RTC seeks to enhance bus stop safety with its shelter installation program, but also continues to work with local jurisdictions to plan for such design projects as bus turnouts can be beneficial in fitting locations. RTC typically installs bus stops approximately every one-quarter mile in order to provide convenience for customers as well as reduce temptation for pedestrians to cross the street outside a crosswalk. Construction includes possible demolition, subgrade preparation, concrete and special inspection of steel and post installed anchors. GES is providing QA observation and testing services, as well as, special inspections including:

*Due to GES' ranking from a previous SOQ, and the successful completion of the original 150 bus shelters, the RTC contracted GES to provide services for an additional 300 shelters across Southern Nevada.*

**Soil Testing** - obtain samples for density proctor and perform periodic in-place density testing services of subgrade soils.

**Concrete** - perform periodic observation of the reinforcing steel, sample and test the concrete.

**Post Installed Mechanical Anchors** - perform periodic observation during installation of mechanical anchors. GES evaluates the dimensions of the drilled holes into concrete, type and size of anchor, edge distance, anchor spacing, embedment and hole cleaning for general conformance to the approved project documents and the product's Evaluation Service Report.

**Steel and Welding** - supply approved special inspectors to perform periodic observation of structural steel placement, high strength bolting, and welding. The steel elements for the project are fabricated by an approved fabricator and periodic observation of structural steel and welding is required. If the steel elements are not from an approved fabricator, continuous observation and field testing of all welds are required, but not included in this scope of work and associated fees.

**Monthly and Final Reports** - GES prepares a report summarizing our observation and testing results on a monthly basis and submits to the RTC. After the completion of our scope of services, GES will prepare a final report summarizing our observation and testing performed and submit to the RTC and to the Clark County Development Services Department.

**PROJECT OWNER:**  
*Regional Transportation Commission*

**GES CLIENT:**  
*Regional Transportation Commission*

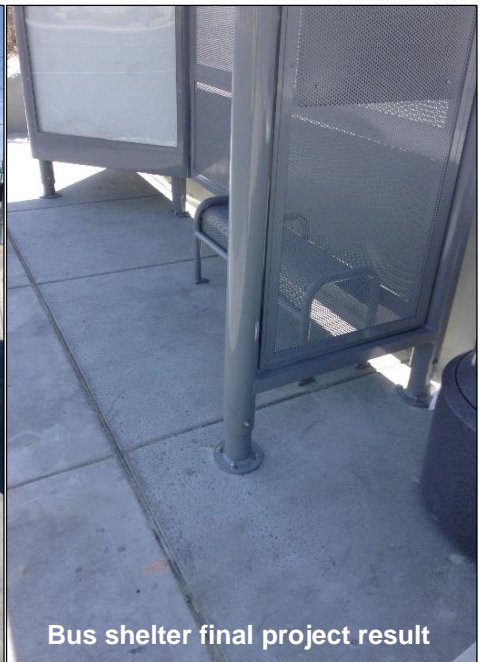
**POINT OF CONTACT:**  
*Mr. Carl Scarborough  
(702) 676-1500*

**TOTAL PROJECT COST:**  
*\$15,000,000*

**FIRM RESPONSIBILITY:**  
*\$355,000*



**Bus shelter final project result**



**Bus shelter final project result**

**OTHER GES PERSONNEL WHO PROVIDED SERVICES NOT LISTED ON FORM H**

Thomas Helm – Special Inspector  
Eric Moss – Materials Testing Technician  
Michael Janoff – Materials Testing Technician

Jeremiah Johnson – Laboratory Technician  
Mae Javier – Staff Professional