

CITY OF LAS VEGAS OAKLEY MEADOWS STORM DRAIN PHASE 1 AND PHASE 2A LAS VEGAS, NEVADA



Phase 1 - Installation of approximately 4,200 linear feet of pre-cast reinforced concrete box (RCB) drain; 200 linear feet of reinforced concrete pipe (RCP) drain laterals; 1,700 linear feet of rectangular concrete-lined channel; three 36-inch waterline relocations; 950 linear feet of 18-inch diameter sewer line relocation; junction structures; transition structures; and drain inlets. The project included the installation of manholes, dewatering, landscape removal and repair, fencing, asphalt concrete paving, and removal of an existing concrete channel.

GES sampled and perform laboratory testing on samples of trench backfill soils; observed and tested compaction of trench subgrade and aggregate base beneath RCBs, pipe zone, trench backfill, backfill for structures, and subgrade and aggregate base beneath pavement; sample and test controlled low strength materials, concrete placed for structures, and hot mix asphalt; and coordinated, supervised, and reported the results and findings to the client.

Phase 2A – Installation of approximately 3,900 linear feet of RCB storm drain, approximately 320 linear feet of RCP storm drain laterals, and approximately 2,200 linear feet of sanitary sewer line relocation. The RCB connects to an existing RCB at the intersection of Charleston Boulevard and Hinson Street installed during Phase 1. The RCB was installed in Charleston Boulevard and the existing parking lot for the Westland Fair Shopping Center. The RCP was capped at Decatur Boulevard to connect to the future Phase 3 construction. At the intersection of Charleston Boulevard and Hinson Street, a RCB was capped to connect to the future Phase 2B construction. In addition, Phase 2A included miscellaneous water line relocation and replacements, junction and transition structures, manholes, drain inlets, dewatering, repaving, asphalt milling, asphalt removal and replacement, and gas line relocations. Concrete curb, gutter, and approaches were replaced as part of the project.

GES provided sampling and performing laboratory testing on samples of trench backfill soils; testing the compaction of trench subgrade and aggregate base beneath RCBs, pipe zone, trench backfill, backfill for structures, and subgrade and aggregate base beneath pavement; sampling and testing controlled low strength materials, concrete placed for structures, and hot mix asphalt; and coordinating, supervising, and reporting the results and findings to the client.

Approximately 2,200 feet of 8-inch PVC sanitary sewer will be installed in Hinson Street. In addition, Phase 2B will include miscellaneous junction and transition structures, manholes, drain inlets, dewatering, repaving, asphalt milling, and asphalt removal and replacements. Concrete curb, gutter and approaches will be replaced as part of the project.

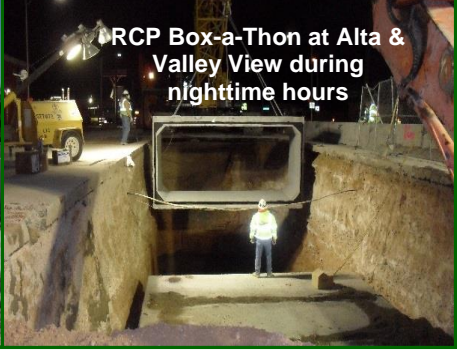
PROJECT OWNER:
City of Las Vegas

GES CLIENT:
G.C. Wallace

POINT OF CONTACT:
Mr. Nick Largent
(702) 804-2026

TOTAL PROJECT COST:
\$15,000,000

FIRM RESPONSIBILITY:
\$159,870



OTHER GES PERSONNEL WHO PROVIDED SERVICES NOT LISTED ON FORM H

Ryan Carey – Materials Testing Technician Anthony Brower – Lab and Field Supervisor	Thomas Thompson – Special Inspector Allen Sanders – Laboratory Technician
--	--