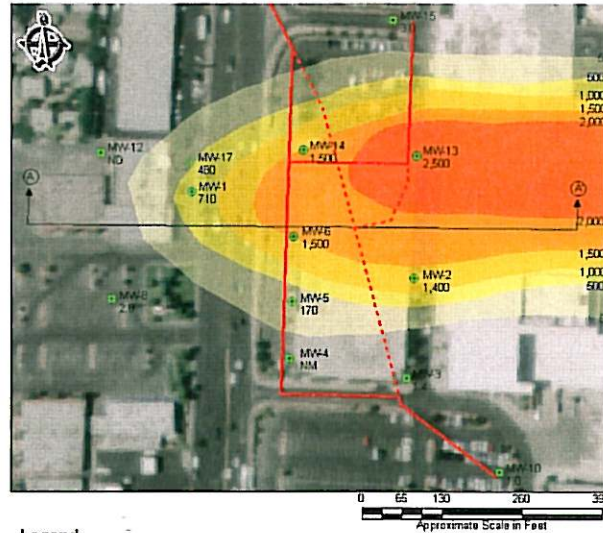


Maryland Parkway PCE Plume

Client – Confidential

Owner – Confidential



- Legend**
- Monitoring Wells
 - Storm Drain (current)
 - Storm Drain (abandoned or removed)

Geotechnical & Environmental Services, Inc. (GES) reviewed documentation available on the Nevada Division of Environmental Protection (NDEP) perchloroethylene (PCE) internet site. The information on this internet site contained, but was not limited to; quarterly monitoring reports, soil and groundwater delineation reports, soil gas investigations, other potentially responsible parties (PRP) and public announcements indicating that a PCE plume is present under the Boulevard Mall and the residential neighborhood located further to the east of the Boulevard Mall. The public announcements lead to a class action lawsuit that was filed by a number of the homeowners presumably affected by the Maryland Square Shopping Center PCE plume. GES also reviewed legal documents relevant to the class action lawsuit for technical accuracy. GES provided a Re-Assessment Report of the Maryland Square Shopping Center PCE Plume based on reviewed documents.